

TE-30

TRUSS TOWER 500 KG / 7 M
LOCK SECURITY
MANUAL WINCH ELEVATION



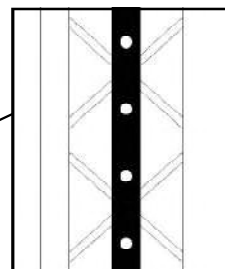
Truss-Tower with square 30x30cm section and steel lifting carriage operated via manual winch cable. Cushioned by the vertical tower structure it moves via nylon pulleys.

The Tower body is 6082-T6 aluminium and is constructed with tubular sections, 50mm external diameter for the lifting sections and 16mm exterior diameter for triangular bars. The Towerlift is set on a solid steel base with twisting wheels for the transport and four stabiliser legs adjustable depending on work surface.

TECHNICAL SPECIFICATIONS

MAXIMUM HEIGHT:	7 m
MAXIMUM LOAD:	500 Kg
SECURITY:	Pin & Track
BASE DIMENSIONS:	2,8 x 2,8 m
FOLDED HEIGHT:	1,80 m
TRANSPORT WEIGHT:	79 Kg

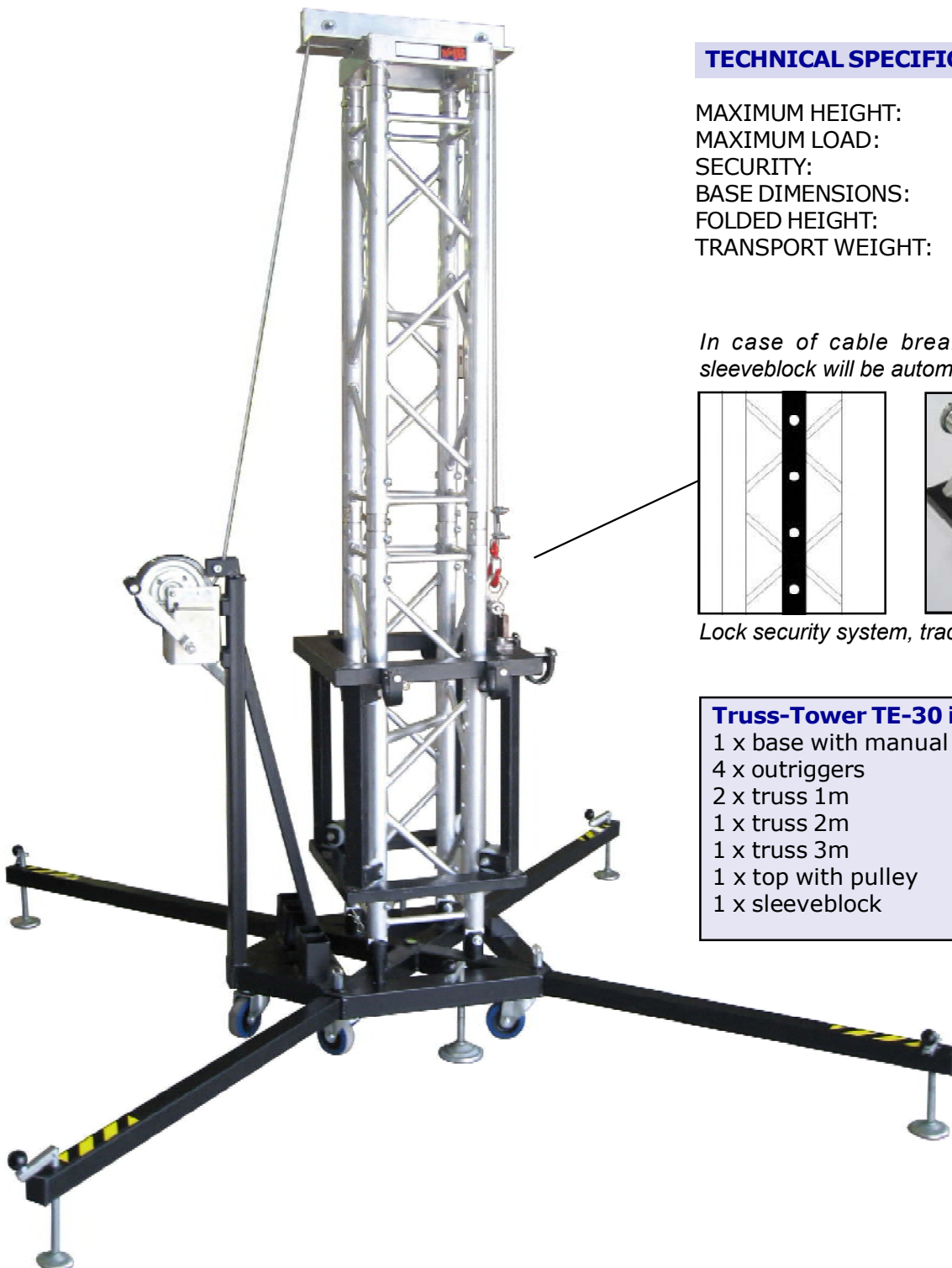
In case of cable breakage the lifting sleeveblock will be automatically blocked.



Lock security system, track and pin details.

Truss-Tower TE-30 includes:

- 1 x base with manual winch
- 4 x outriggers
- 2 x truss 1m
- 1 x truss 2m
- 1 x truss 3m
- 1 x top with pulley
- 1 x sleeveblock



TOP WITH PULLEYS



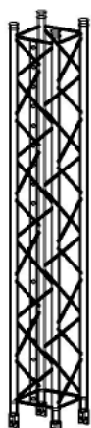
SQUARE TRUSS 1m



SQUARE TRUSS 3m



SQUARE TRUSS 2m



SQUARE TRUSS 1m



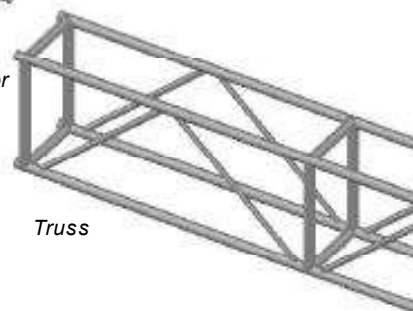
BASE



3 WAY
SLEEVE BLOCK



Adaptor



Truss

Optional Truss Adaptors



SA-30
SA-40



SA-52
SA-58

SA-30, with truss TR-C30
SA-40, with truss TR-C40
SA-52, with truss TR-P52
SA-58, with truss TR-P58

TE-30 can be used with the following Truss:

Square 30x30 cm
Square 40x40 cm
Square 52x52 cm

VMB truss TR-C30
VMB truss TR-C40
VMB truss TR-P52

OUTRIGGER

